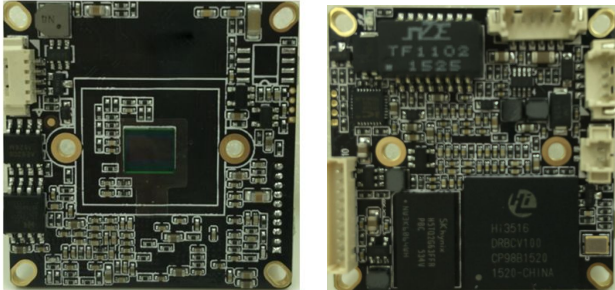


# S718H16D/S718H16DF

## 2.0 megapixel 1 Boards IP Camera Module, Hi3516D + OV 2718

1/3"2.0 Megapixels Progressive Scan OV 2178 CMOS, Hisilicon Hi3516D Chipset, the highest resolution of 1920\*1080, 0.05 Lux@F1.2 (color); 0.01 Lux@F1.2 (black and white );38X38mm single boards ; IR - CUT (day/night), adapt Bullet, Dome;H.264 or H.265 video coding, double stream, ONVIF 2.4, be compatible many NVR and platform management software.



## Features

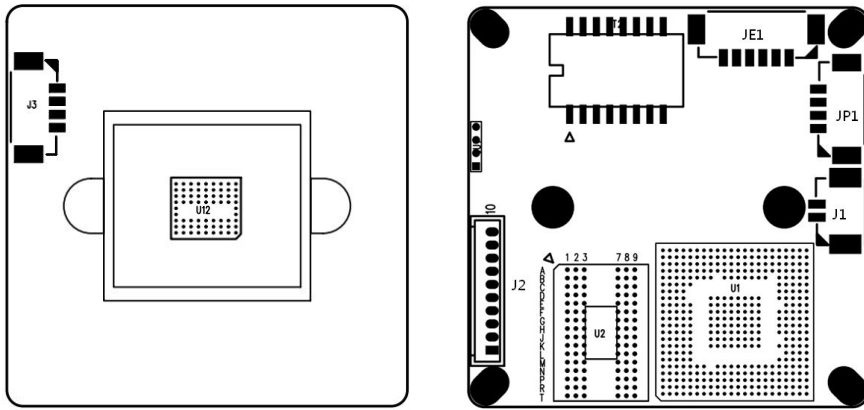
- > Hisilicon Hi3516D
- > 1/3" 2.0 Megapixels Progressive Scan OV 2178 CMOS
- > Max 25/30fps@2.0 Megapixels (1920x1080, 1280x960, 1280x720)
- > Size 38X38mm
- > H.264 & MJPEG, double stream
- > Privacy Mask, Motion Detection
- > Support Onvif 2.4 protocol
- > Smart function: Privacy Mask, Motion Detection, Network disconnection, Out-of-focus detection, Smart Encoding, 4 ROI areas.

## Specifications

Model	S718H16D	S718H16DF
<b>Camera</b>		
Image Sensor	1/3" 2.0 Megapixels Progressive Scan OV 2178 CMOS	
CPU	Hisilicon 3516D	
Effective Pixels	1920(H)x1080(V)	
Scanning System	Progressive	
Electronic Shutter Speed	Auto (1/25 ~ 1/10000s)	
Min. Illumination	0.05Lux/F1.2 (Color)	
S/N Ratio	≥50db(AGC OFF)	
<b>Camera Features</b>		
Day/Night	Auto(ICR)/Color/B/W	
WDR	digital WDR	
White Balance	Auto	
Gain Control	Auto	
Noise Reduction	3D	
Privacy Masking	Up to 4 areas	

<b>Video</b>		
Compression	H.265/H.264/MJPEG	
Resolution	1920×1080/1280*720/704×576/640*480/640*352/320×240	
Frame Rate	Main Stream	1920×1080/1280*720(1 ~ 25/30fps)
	Sub Stream	704×576/640*480/640*352/320×240(1 ~ 25/30fps)
Bit Rate	32KB ~16Mbps, support VBR, CBR	
Text Overlay	Channel, Date & Time, Bit Rate	
<b>Network</b>		
Data Storage	Video record, Picture format	
Trigger	Manual, Automatic(motion detection, alarm, schedule, cycle )	
Alarm data transmission	FTP, E-mail, Browser, CMS	
Protocol	TCP/IP、UDP、RTP、RTSP、RTCP、HTTP、DNS、DDNS、DHCP、FTP、NTP、PPPOE、SMTP、UPNP	
ONVIF	ONVIF 2.4	
Max. User Access	10 users, IE, Google, Firefox	
Smart Phone	Windows Mobile, iPhone, iPad, Android	
<b>Auxiliary Interface</b>		
Audio in	N/A	Support
Audio out	N/A	Support
BNC Video out	N/A	NA
USB	N/A	Support
Alarm in/out	N/A	NA
IO Interface	N/A	Support
<b>General</b>		
Power Supply	DC12V / PoE (802.3af)	
Power Consumption	<3W	
Working Environment	-20°C~+55°C , Less than 90% RH	
Dimensions	38 x 38 x 10mm	
Weight	0.1kg	

## Connector

**J4 Power Supply Connector**

1	DC12V
2	CMT_R
3	CMT_T
4	GND

**J6 Network Connector**

1	RJ45_1
2	RJ45_2
3	RJ45_3
4	RJ45_6
5	Network Connected Light (Green light)
6	Network Status Light (Yellow light)

**J1 IR-cut Connector**

1	IR-CUT Control Signal 5V
2	IR-CUT Control Signal 5V

**J3 IR Light Board Connector**

1	IR Light Board Power Supply (12V)
2	GND
3	IR Feedback Signal Input (0.8V-12V)
4	IC PWM Control

**J2 Functions Connector**

1	Audio In (MIC/ Line )
2	GND (Audio)
3	Audio Out
4	Reset
5	GND
6	USB_D-
7	USB_D+
8	USB 5V Power Supply
9	NULL
10	NULL